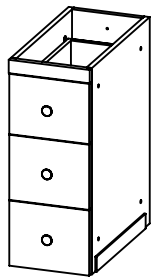


PARTS INCLUDED IC8011-XX



A x 1
Watson 11
Bridge



B x 8
Threaded rod



C x 16
Screw cap

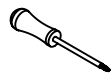


D x 1
Wall screw



E x 1
Wall anchor

TOOLS REQUIRED



Phillips
screwdriver x 2



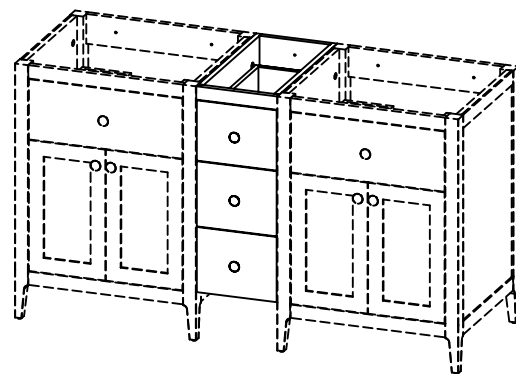
Measuring
tape



Power drill
3/8" dia drill bit



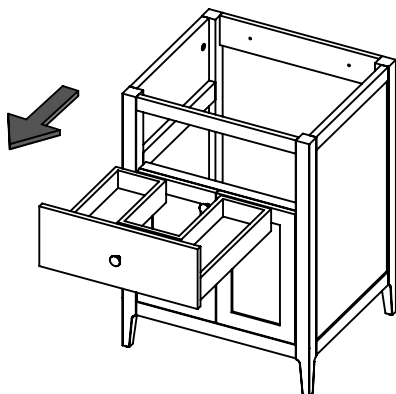
Pencil



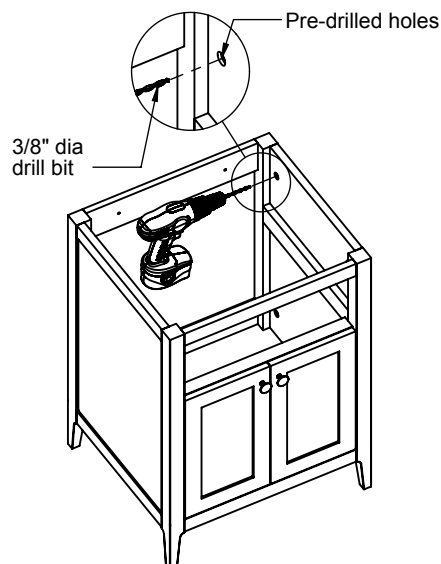
Finished view

INSTALLATION INSTRUCTIONS

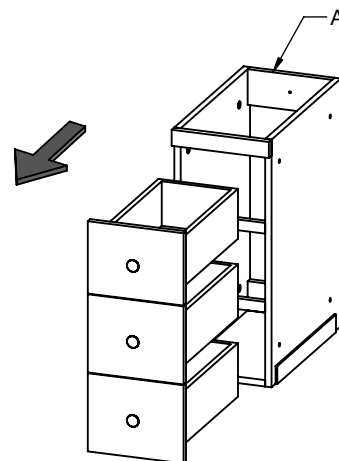
- 1** Remove drawer from WATSON vanity. See drawer removal in the next page. (WATSON vanity sold separately.)



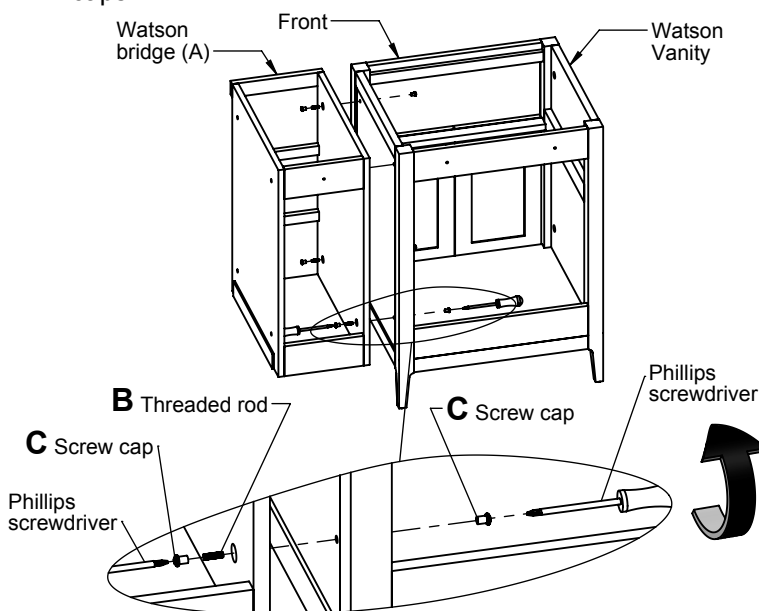
- 2** Finish drilling the pre-drilled holes in WATSON vanity. Make sure to drill **only** the side that will connect to WATSON bridge.



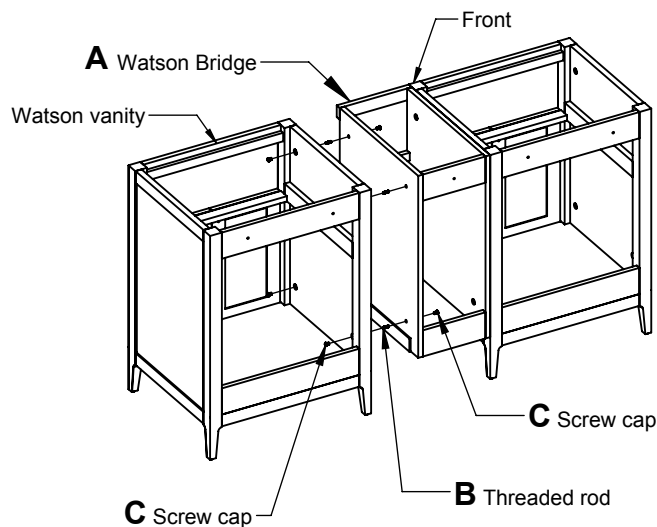
- 3** Remove drawers from WATSON bridge (A). See drawer removal in the next page.



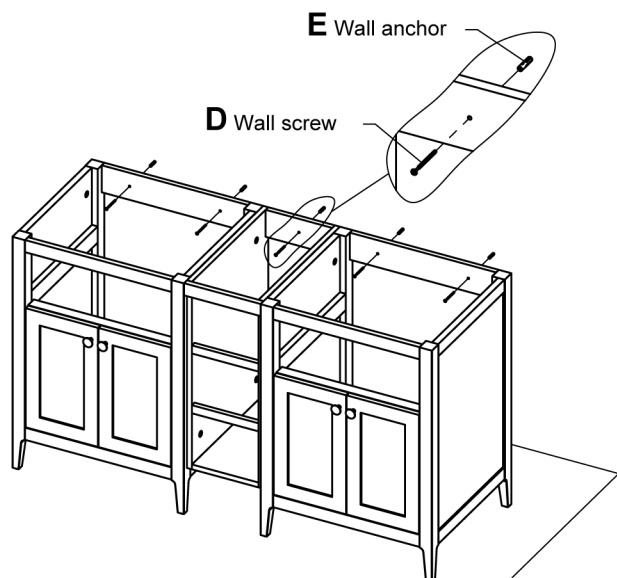
- 4** Attach WATSON bridge (A) to vanity by screwing the threaded rod (B) into screw cap (C) as shown below. Use a phillips screwdriver on both sides to tighten the screw caps.



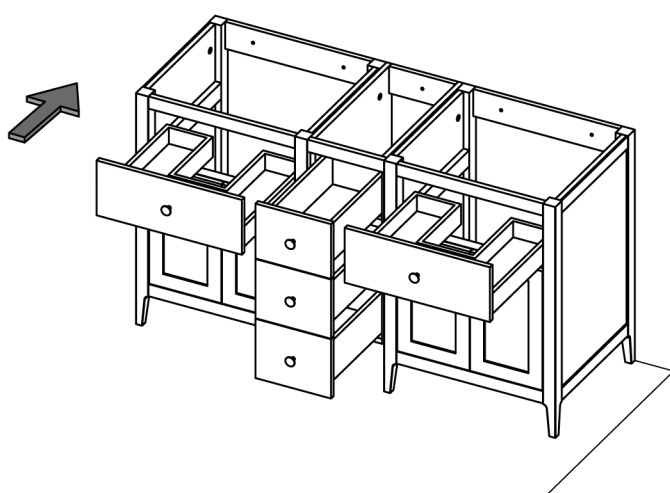
- 5** Repeat step 1 and 2 using second vanity. Attach second vanity to the other side of WATSON bridge (A) by repeating step 4.



6 Fix vanity to the wall using the screw and anchors provided with each WATSON vanity and bridge.

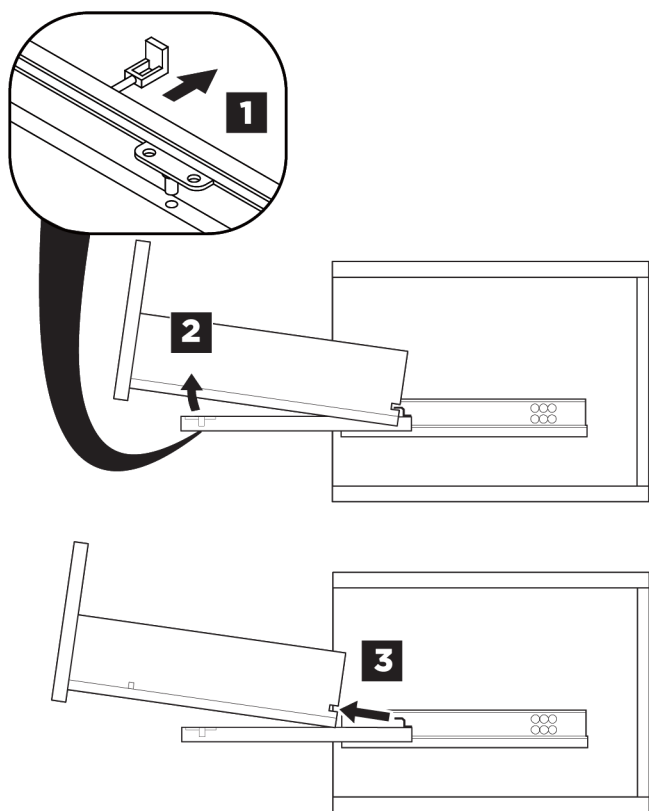


7 Insert all drawers back inside the cabinets. See drawer installation below.



DRAWER REMOVAL AND INSTALLATION

REMOVAL



INSTALLATION

