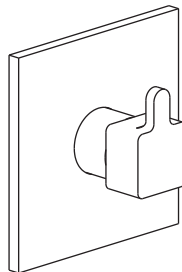
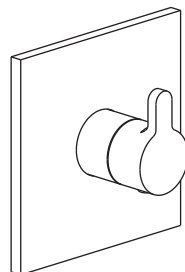




Volume Control Trim Installation
Instructions
Owners Manual



IS401-1-1

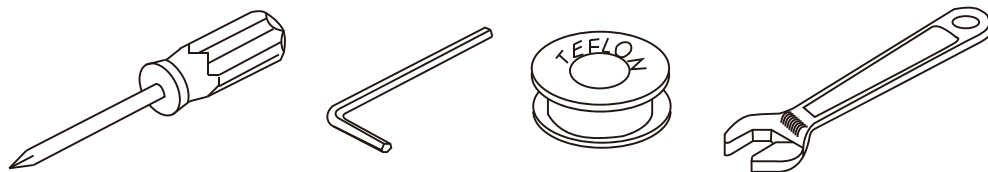


IS401-1-2

For easy installation of your Inolav® faucet you will need:

- To **READ ALL** the instructions completely before beginning.
- To **READ ALL** warnings, care, and maintenance information.

You May Need



Installation Considerations:

- For best results, We recommends that this unit be installed by a licensed, professional plumber.
- Please read over these instructions thoroughly before beginning installation. Make sure that you have all tools and supplies needed to complete the installation.
- To prevent scald injury, the maximum output temperature of the shower valve must be no higher than 120°F. In Massachusetts, the maximum output temperature can be no higher than 112°F.
- Keep this booklet and the receipt (or other proof of date and place of purchase) for this product in a safe place. The receipt is required should it be necessary to request warranty parts.

Technical information:

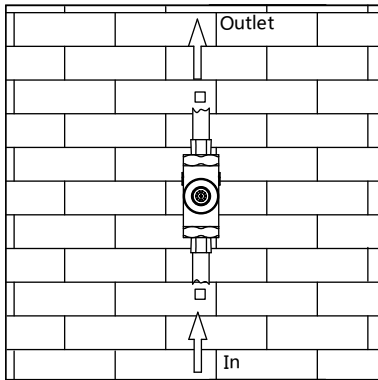
Recommended water pressure : 15 - 75 PSI

Max. water pressure : 145 PSI

Recommended hot water temp. : 120 - 140°F

Max. hot water temp: 176°F

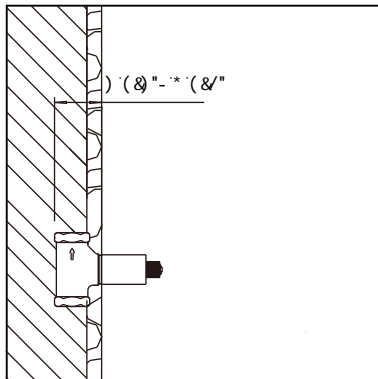
Flow rate: Up 5.4 GPM@60 PSI



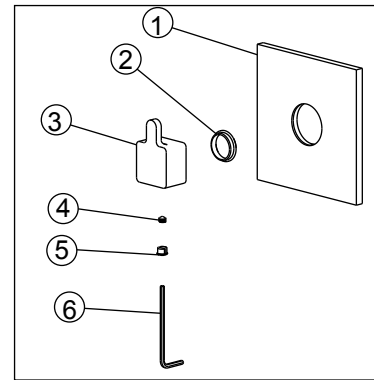
1- Connect the water pipe:

Downn for water Inlet, Up for water outlet.
Check whether leak under the water
pressure not higher
than 145PSI.

Caution! Flush the hot and
supplies before you start the
installation.

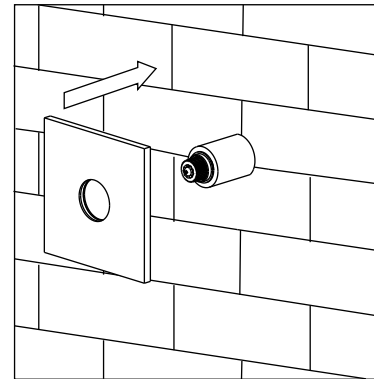


2- Leave enough space for the valve
on the wall, insert the valve and adjust the
valve space between 2 1/2" to 3 1/8".

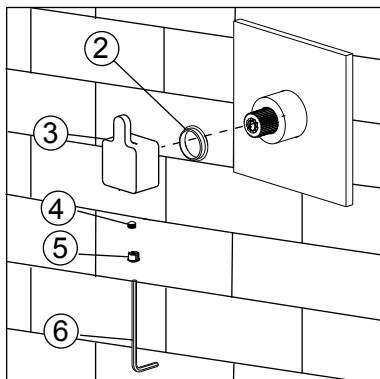


3-Trim installation preparation:

Make sure you have these spare parts
before you go to next step.
escutcheon(1) plastic washer(2),
handle(3), screw(4), cap(5),
allen key(6)

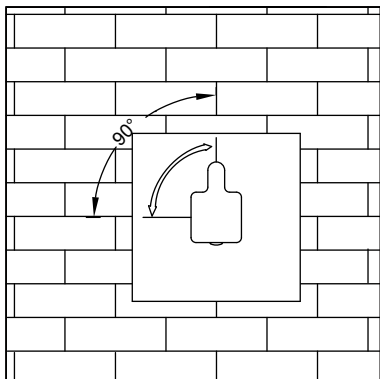


4-Slide the escutcheon (1) slowly,
make sure the escutcheon keep
tight with the wall.

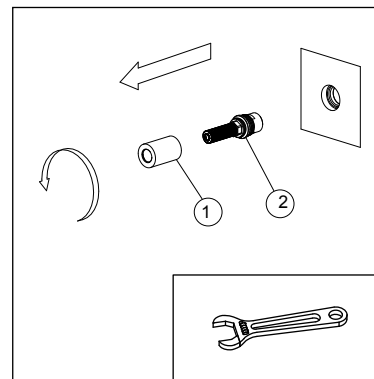


5- Handle installation:

Insert handle(3) to the gear shaping of the cartridge, Make sure plastic washer(4) is on top of handle (1), Use the allen key to tighten the screw(4), then put on the cap(5).

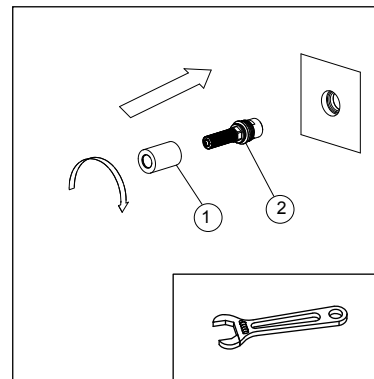


6- After the handle installation, revolve the handle as the diagram to test the handle open and close function. The upward position should be the off function.



Cartridge Remove:

Screw out the sleeve(1), take out the cartridge(2) by a adjustable wrench.



Cartridge installation:

Screw the cartridge (2) to the valve by a adjustable wrench, be noted the cartridge pin should fix the hole of the valve. screw the sleeve(1) to the cartridge (2).

