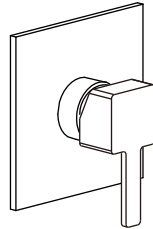




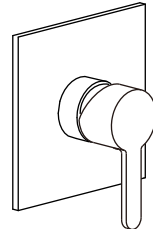
Pressure Balance Valve Trim Installation
Instructions
Owners Manual



ASME A.112.18.1



IS101-1-1

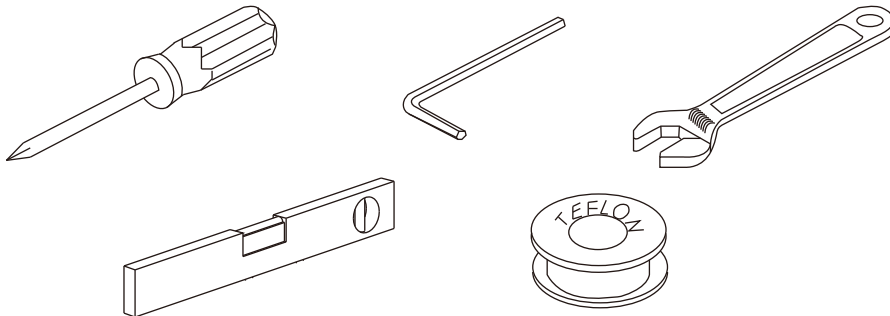


IS101-1-2

For easy installation of your Inolav® faucet you will need:

- To **READ ALL** the instructions completely before beginning.
- To **READ ALL** warnings, care, and maintenance information.

You May Need



For warranty issues call us at 1-855 472 4304 or send us an e-mail at warranty@inolav.com

Installation Considerations:

- For best results, We recommends that this unit be installed by a licensed, professional plumber.
- Please read over these instructions thoroughly before beginning installation. Make sure that you have all tools and supplies needed to complete the installation.
- To prevent scald injury, the maximum output temperature of the shower valve must be no higher than 120°F. In Massachusetts, the maximum output temperature can be no higher than 112°F.
- Keep this booklet and the receipt (or other proof of date and place of purchase) for this product in a safe place. The receipt is required should it be necessary to request warranty parts.

Technical information:

Recommended water pressure : 15 - 75 PSI

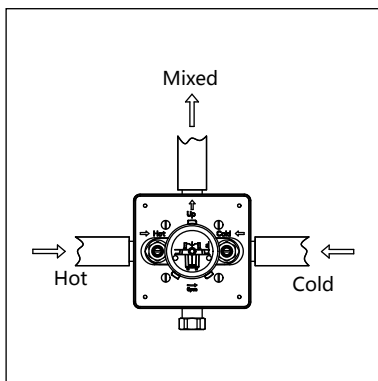
Max. water pressure : 145 PSI

Recommended hot water temp. : 120 - 140°F

Max. hot water temp: 176°F

Flow rate: Up 5.4 GPM@60 PSI

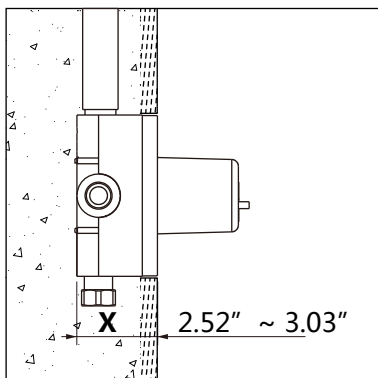
For questions call us at 1-855 472 4304 or visit our website at www.inolav.com



1- Connect the water pipe:

Left for hot water, right for cold water.

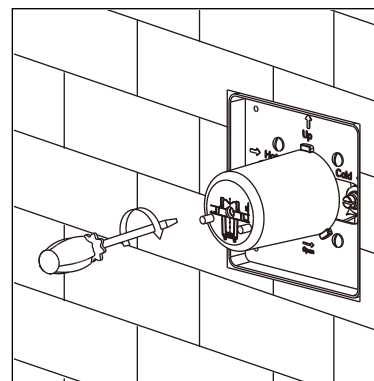
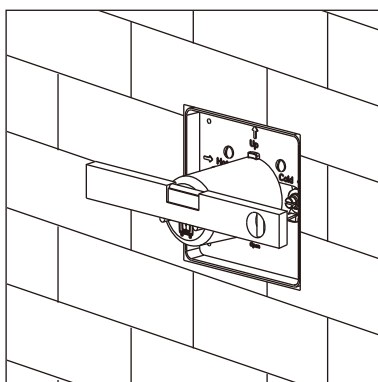
Caution! Flush the hot and supplies before you start the installation.



2- Insert the Valve to the wall:

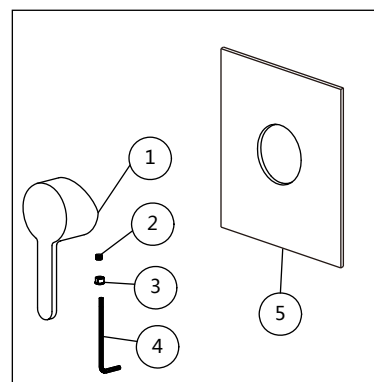
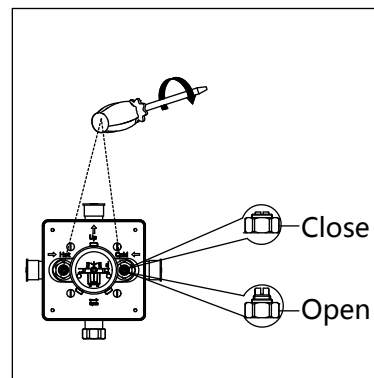
Leave enough space for the valve on the wall, insert the valve and adjust the valve space between 64mm to 77mm(2.52" to 3.03"), using spirit level to adjust the two salient point at same level, then fix the valve and put on tiles.

Caution! Please check the tile thickness, make sure the plastic surface not go beyond the tile surface.



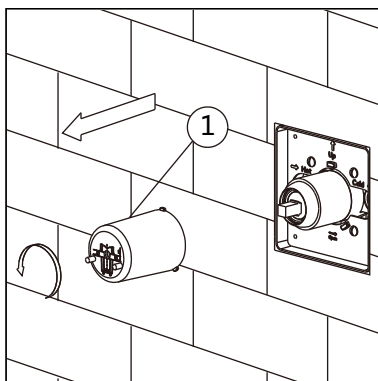
3- Water sealing test:

Use screwdriver close the stops, open the water pipe to test the waterway sealing. If the sealing is not good, fix it then go to next step.

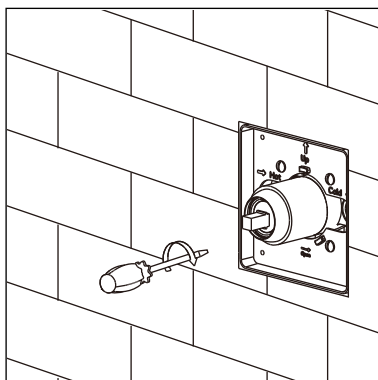


4- Trim installation preparation:

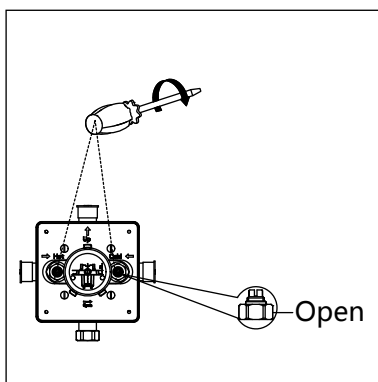
Make sure you have these spare parts before you go to next step. handle(1), handle screw(2), cap (3), Allen key(4), escutcheon(5).



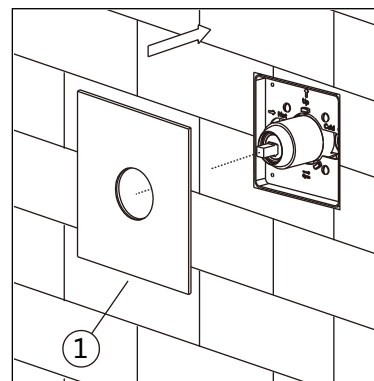
5- Remove the protective plastic cover(1).



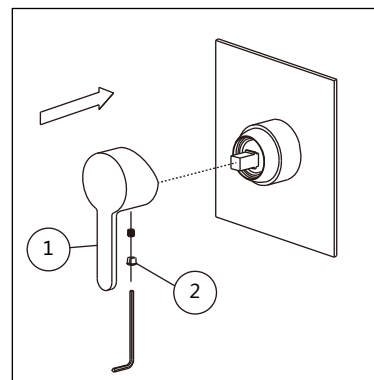
6- Open the stops:
Using screwdriver to open the stops to maximum open status.



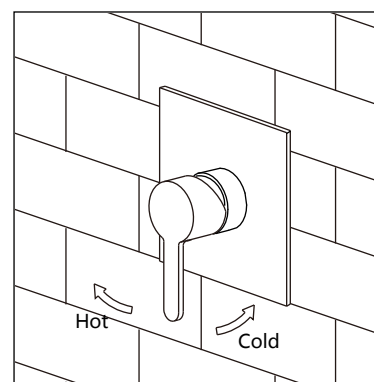
Caution! Don't keep open when the stops reach the maximum open status, otherwise it may broken.



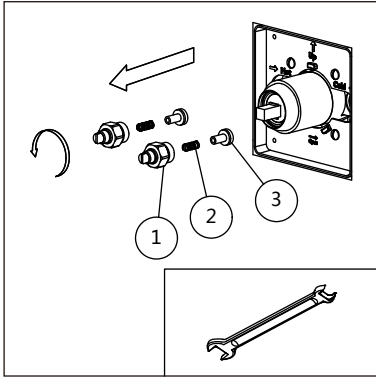
7- Install the escutcheon(1) slowly, make sure the escutcheon keep tight with the wall.



8- Install the handle(1) to the pressure balance cartridge, adjust the handle(1) direction, handle face down, then Use the allen key tighten the screws, put on the caps(2).

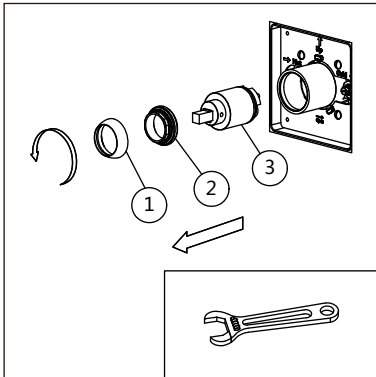


9- Test the handle: Lift the handle, turn left is for hot water, turn right is for cold water.



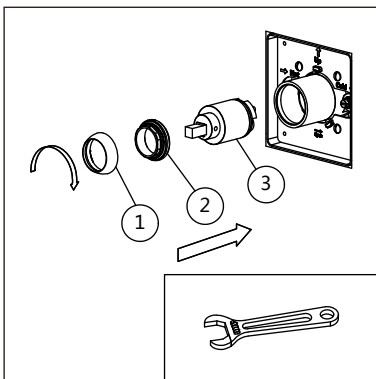
Clean the stops filters:

- 1- Using the spanner to anti clockwise stops (1).
- 2- Take out filter (2) and check Valve (3).
- 3- Using clear water to rinse filter (2).
- 4- Slide filter (2) to check Valve (3), then thread it to the valve body.
- 5- Using the spanner to connect stops (1) to the valve.



Remove the pressure balance cartridge :

- 1- Anti clockwise the sleeve(1).
- 2- Using a spanner anti clockwise locking nut (2).
- 3- Remove the volume control cartridge(3).



Install the pressure balance cartridge :

- 1- Put pressure balance cartridge (3) to the Valve, be noted the cartridge pin should fix the hole of the valve.
- 2- Using a spanner clockwise locking nut (2).
- 3- Clockwise the sleeve(1).